

technical specification





General informations:

Warranty:

MDD products - **5 years.**

Electrical components and fabric - **2 years.**

Certificate - MFC:



Certificate - fabric:



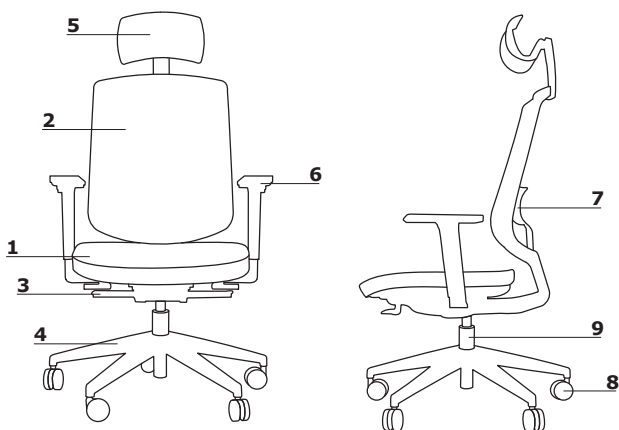
Assembly:

product delivered in separate elements

Packing:

cardboard

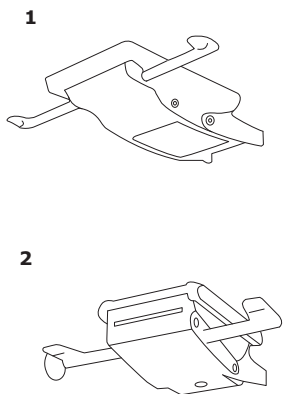
Technical specification



1. **Seat** - moulded foam, density of 48 kg/m³; upholstered, sliding
2. **Backrest** - mesh in Runner colours
3. **Mechanism** - Auto Synchro; OPTION WITH EXTRA CHARGE - Synchro Pro
4. **Base** - 5-star, polypropylene, Ø=680 mm, h=124 mm; OPTION WITH EXTRA CHARGE - 5-star, polished aluminium, Ø=680 mm, h=124 mm
5. **OPTION WITH EXTRA CHARGE** - headrest - black mesh
6. **OPTIONS WITH EXTRA CHARGE:**
 - armrest 2D - V3 - polyurethane, colour: black
 - armrest 3D - V3 - polyurethane, colour: black
7. **OPTION WITH EXTRA CHARGE** - manual height adjustable (60 mm) lumbar support
8. **Castors** - Ø65 mm, for soft floors PP+PA, colour: black; OPTION WITH EXTRA CHARGE - for hard floors PP+PA, colour: black
9. **Actuator** - steal gas spring; adjustment range 100 mm; colour: chrome or black

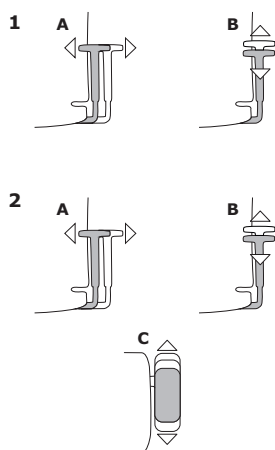
- max. load 120 kg

Mechanism



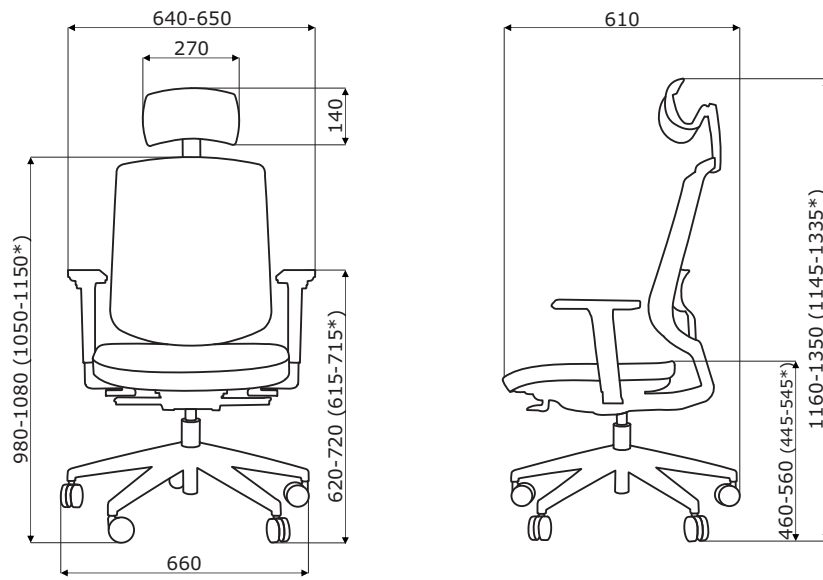
1. **AUTO SYNCHRO:**
 - synchronized automated regulation chair back press mechanism
 - designed for usage 45 and 120kg
 - allows the backrest to tilt from 0° to 18° and the seat to tilt from 0° to 4,5° at the same time
 - it is possible to lock the backrest only in the 0° position
 - seat depth adjustment range 100 mm, possibility to lock in 11 different positions
2. **SYNCHRO PRO:**
 - tilt angle of the backrest 25° and the seat 10°
 - designed for usage 45 and 120kg
 - additional seat and backrest tilt of 3°
 - 3 blocking positions of the backrest
 - Anti - shock system
 - adjustment of lateral tension
 - seat depth adjustment range 100 mm, possibility to lock in 11 different positions

Armrests



1. **Adjustable armrest - 2D-V3**
 - width adjustment (A)
 - height adjustment (B)
2. **Adjustable armrest - 3D-V3**
 - width adjustment (A)
 - height adjustment (B)
 - depth adjustment (width adjustment inwards) (C)

Dimensions



* Auto Synchro



SAVA
660 / 610 / 1160-1350
20 kg

* dimensions expressed in millimeters: width x depth x height

Fabric Nemo



NE-1 Beige



NE-2 Yellow



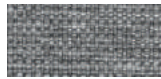
NE-3 Orange



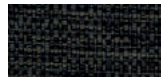
NE-5 Red



NE-9 Green



NE-10 Grey



NE-14 Graphite



NE-15 Navy blue



NE-16 Black



NE-17 Blue

Technical data:

Material	polyester 100%
Fabric weight	366g/m2
Abrasion resistance rubs	PN_EN ISO 12947 - 2:2 100,000
Pilling resistance	scale 1-8, max. 8, PN-EN ISO 105 - B02 (3-4)
Colour fastness to light	scale 1-5, max. 5, PN-EN 1021 - 2,
Colour fastness to rubbing	PN-EN 1021 - 1 skcale 1-5, max. 5, EN ISO 105x12 (wet/dry) 4-5

Fabric Runner - second price group



R-63034 Orange



R-64089 Red



R-66063 Blue



R-60011 Grey



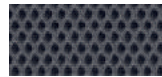
R-68056 Green



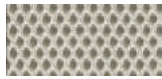
R-66064 Navy Blue



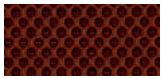
R-60999 Black



R-60025 Graphite



R-61128 Beige

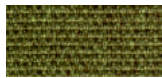


R-61130 Brown

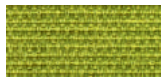
Technical data:

Material	80% polyester, 20% post-consumer recycled polyester
Fabric weight	510 g/lm (16.45 oz/lin.yd.)
Abrasion resistance rubs	BS EN ISO 12947-2 70,000 Martindale cycles
Pilling resistance	scale 1-5, max 5, EN ISO 12945-2 (4-5)
Colour fastness to light	scale 1-8, max 8, EN ISO 105-B02 (5-7)
Colour fastness to rubbing	scale 1-5, max 5, EN ISO 105x12 (wet/dry) 4-5
Acoustic test sound absorption	ISO 354
Flammability	BS EN 1021-2 Match, CA TB 117-2013, BS EN 1021-1 (cigarette) Class Uno UNI 9175 Class 2, EMME

Fabric Medley - second price group



M-68005 Dark olive



M-68002 Light olive



M-68115 Green



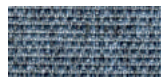
M-61002 Beige



M-67053 Navy blue



M-67006 Light blue



M-66008 Grey



M-64019 Red



M-63064 Pink



M-60999 Black

Technical data:

Material	polyester 100%
Fabric weight	510 g/lm (16.45 oz/lin.yd.)
Abrasion resistance rubs	BS EN ISO 12947-2, 75,000 cykli Martindale
Pilling resistance	scale 1-5, max. 5, EN ISO 12945-2 (4)
Colour fastness to light	scale 1-8, max. 8, EN ISO 105-B02 (5-7)
Colour fastness to rubbing	scale 1-5, max. 5, EN ISO 105x12 (wet/dry) (4-5/4-5)
Acoustic test sound absorption	ISO 354
Flammability	BS EN 1021-1 (cigarette) BS 476 Part 7, Class 2 Class Uno UNI 9174 - UNI 8457 CA TB 117-2013 ASTM E 84 Class I

Fabric Atlantic* – second price group



Technical data:

Material	polyester 100%
Fabric weight	530 g/lm (17.09 oz/lin.yd.)
Abrasion resistance rubs	BS EN ISO 12947-2, 110,000 Martindale cycles
Pilling resistance	scale 1-5, max. 5, EN ISO 12945-2 (4-5)
Colour fastness to light	scale 1-8, max. 8, EN ISO 105-B02 (5-7)
Colour fastness to rubbing	scale 1-5, max. 5, EN ISO 105x12 (wet/dry)
Flammability	CA TB 117-2013 ASTM E 84 Class I BS EN 1021-2 (match) BS EN 1021-1 (cigarette)

Fabric Vita – second price group



Technical data:

Material	Surface: 98,5% PVC, 1,5% PU Substrate: 50% polyester, 50% Cotton
Fabric weight	850g/m2 ± 10% (1190G/lin. m ± 10%)
Abrasion resistance rubs	BS EN ISO 5470-2, 100,000 Martindale cycles
Colour fastness to light	6 (ISO 105 - B02)
Colour fastness to rubbing	wet: 4, dry: 4 (ISO 105 - X12)
Flammability	BS EN 1021 - (cigarette) BS EN 1021 - 2 (match) BS 5852 - (Ignition Source 5) BS 7176 - (Medium Hazard)
Flexes	BS EN ISO 7854 - Method B, 400.000 Flexing cycles
Anti-microbial / Anti-fungal	AATCC 147

Fabric River – second price group



Technical data:

Material	polyester 100%
Fabric weight	300g/m2 (+/- 5%)
Abrasion resistance rubs	100,000 Martindale cycles (EN ISO 12947-1,2)
Pilling resistance	EN ISO 12945-2 (5)
Colour fastness to light	4 (EN ISO 105-B02)
Colour fastness to rubbing	dry: 4-5, wet: 3 (EN ISO 105-x12)
Flammability	BS 5852: Part 1, Ignition Source 0 (cigarette) BS 5852: Part 1, Ignition Source 1 (match) En1021 - 2

* There is a possibility of ordering the product in full colour spectrum of Atlantic range, as per Gabriel's pattern book, within 8 weeks

Fabric Xtreme - third price group



Technical data:

Material	100% Trevira Clame (CS) 100% Recycling (YS) Flame Retardant polyester. Non metallic dyestuffs.
Fabric weight	310 g/m ² ±5% (435g/lin.m ±5%)
Abrasion resistance rubs	60,000 Martindale cycles (CS) 100,000 Martindale cycles (YS)
Colour fastness to light	6 (ISO 105 - B02)
Colour fastness to rubbing	wet: 4, dry: 4 (ISO 105 - X12)
Flammability	EN 1021 - 1 (cigarette), EN 1021 - 2 (match) BS 7176 Low Hazard, NF P92-507 M1, DIN 4102 B1, UNI 9175 Class 1 IM, UNI 8456, UNI 9174 & UNI 9177 Classe Uno, ÖNORM B 3825 & A 3800-1 NF D 60-013

Fabric Synergy - third price group



Technical data:

Material	95% Virgin Wool, 5% Poliamid
Fabric weight	400g/m ² ±5% (560 g/lin.m ±5%)
Abrasion resistance rubs	Independently certified ≥100,000 Martindale cycles
Colour fastness to light	5 (ISO 105 - B02)
Colour fastness to rubbing	ISO 105 - X12 - wet: 4, dry: 4
Flammability	EN 1021 - 1 (cigarette), EN 1021 - 2 (match), BS 7176 Low Hazard, UNI 9175 Classe 1 IM, ÖNORM B 3825 & A 3800-1

Fabric Silvertex – third price group

There is a possibility of ordering the product in full colour spectrum of Silvertex range, as per Spradling's pattern book, within 15 working days.

Technical data:	
Material	Topcoat: 100% Vinyl Backing: 100% Polyesterr Hi-Loft™
Fabric weight	685 gr/m2
Abrasion resistance	>300,000 cycles Martindale
UV-resistance	>= 7 (1000 hours, blue wool scale)
Cold Crack resistance	-23°C
Flame retardancy	NF P 92-503 / M2 EN 1021, Part 1&2 DIN 4102 B2 ÖNORM B 3825, Gruppe I – Schwerbrennbares Verhalten ÖNORM A 3800, Teil I, Qualmbildungsklasse QI – schwachqualmend IMO Res. MSC.307 (88) (2010 FTP Code) Annex I Part 8 (MED) Marine Equipment Directive in its current valid version UNI 9175 (1987) / UNI 9175/FAI (1994) Classe I.IM (uno I EMME) UNE 23.727-90 IR /M2 EN 71-2: 2006+AI: 2007 Safety of Toys – Part 2: Flammability ECE R 118 (replaces Directive 95/28/EC) FMVSS 302 FAR 25/853
Antimicrobial	Antifungal Protection, Antibacterial Protection, Antimycotic Protection

Fabric Atlas – fourth price group



Technical data:	
Material	90% new wool, 10% nylon
Fabric weight	286g/m2, 400g/lm
Abrasion resistance rubs	100,000 cykli Martindale, EN ISO 12947
Colour fastness to light	ISO 105 B02: 6-7
Colour fastness to rubbing	ISO 105-X12:2001, (wet/dry) 4-5/4-5
Flammability	BS EN 1021-2 Match, BS EN 1021-1 Cigarette, BS 5 5852 Crib 5, BS 5852 ignition source 3, BS 5852 Part 1, NF D 60 013, UNI 9175 1IM, US Cal. Bull. 117-2013

Fabric Field2 – fourth price group



Technical data:	
Material	100% Trevira CS
Fabric weight	321g/m2, 450g/lm
Abrasion resistance rubs	100,000 cykli Martindale, EN ISO 12947
Colour fastness to light	ISO 105 B02: 5-7
Flammability	BS EN 1021-2 Match, BS EN 1021-1 Cigarette, BS 5 5852 Crib 5, DIN 4102 B1 FAR 25.853, UNI 9177 classe 1, US Cal. Bull. 117-2013

Back, headrest



R-60999 Black

Armrest, castors



Black

Base



Black



Polished
aluminum *

* OPTION WITH EXTRA CHARGE